

ROMA



* STAINLESS STEEL

L	W	H	HOLE CENTRE	FINISH	CODE
155	10	35	96	STAINLESS STEEL	100.01.096
185	10	35	128	STAINLESS STEEL	100.01.128
220	10	35	160	STAINLESS STEEL	100.01.160
250	10	35	192	STAINLESS STEEL	100.01.192
285	10	35	224	STAINLESS STEEL	100.01.224
370	10	35	288	STAINLESS STEEL	100.01.288
435	10	35	352	STAINLESS STEEL	100.01.352
530	10	35	448	STAINLESS STEEL	100.01.448

KIRRA



* STAINLESS STEEL & SATIN NICKEL

L	W	H	HOLE CENTRE	FINISH	CODE
139	21	32	128	ST/STEEL & SATIN NICKEL	118.21.128
203	21	32	192	ST/STEEL & SATIN NICKEL	118.21.192
267	21	32	256	ST/STEEL & SATIN NICKEL	118.21.256
363	21	32	352	ST/STEEL & SATIN NICKEL	118.21.352
523	21	32	512	ST/STEEL & SATIN NICKEL	118.21.512

LONGREACH



* STAINLESS STEEL

L	W	H	HOLE CENTRE	FINISH	CODE
136	12	35	96	STAINLESS STEEL	120.01.096
168	12	35	128	STAINLESS STEEL	120.01.128
220	12	35	160	STAINLESS STEEL	120.01.160
304	12	35	224	STAINLESS STEEL	120.01.224
368	12	35	288	STAINLESS STEEL	120.01.288
432	12	35	352	STAINLESS STEEL	120.01.352
496	12	35	416	STAINLESS STEEL	120.01.416
560	12	35	480	STAINLESS STEEL	120.01.480

BYRON



* BRUSHED NICKEL

L	W	H	HOLE CENTRE	FINISH	CODE
106	10	33	96	BRUSHED NICKEL	130.11.096
138	10	33	128	BRUSHED NICKEL	130.11.128
170	10	33	160	BRUSHED NICKEL	130.11.160
202	10	33	192	BRUSHED NICKEL	130.11.192
234	10	33	224	BRUSHED NICKEL	130.11.224
298	10	33	288	BRUSHED NICKEL	130.11.288
490	10	33	480	BRUSHED NICKEL	130.11.480

MALENY



* SATIN NICKEL

L	W	H	HOLE CENTRE	FINISH	CODE
142	10	30	128	SATIN NICKEL	135.02.128
205	10	30	192	SATIN NICKEL	135.02.192
142	10	30	128	POLISHED CHROME	135.03.128
205	10	30	192	POLISHED CHROME	135.03.192

KIMBERLEY



* STAINLESS STEEL

L	W	H	HOLE CENTRE	FINISH	CODE
105	10	30	96	STAINLESS STEEL	140.01.096
140	10	30	128	STAINLESS STEEL	140.01.128
170	10	30	160	STAINLESS STEEL	140.01.160
235	10	30	224	STAINLESS STEEL	140.01.224
300	10	30	288	STAINLESS STEEL	140.01.288
365	10	30	352	STAINLESS STEEL	140.01.352
425	10	30	416	STAINLESS STEEL	140.01.416
520	10	30	512	STAINLESS STEEL	140.01.512

CUDGEN



* ALUMINIUM

L	W	H	HOLE CENTRE	FINISH	CODE
107	20	30	96	ALUMINIUM	154.08.096
138	20	30	128	ALUMINIUM	154.08.128

KATOOMBA



* MATT NICKEL

L	W	H	HOLE CENTRE	FINISH	CODE
140	18	23	128	MATT NICKEL	158.13.128

MORETON



* BRUSHED NICKEL

L	W	H	HOLE CENTRE	FINISH	CODE
102	12	26	96	BRUSHED NICKEL	160.02.096
135	12	26	128	BRUSHED NICKEL	160.02.128
166	12	26	160	BRUSHED NICKEL	160.02.160
231	12	26	224	BRUSHED NICKEL	160.02.224
295	12	26	288	BRUSHED NICKEL	160.02.288

NANANGO



* BRUSHED NICKEL

L	W	H	HOLE CENTRE	FINISH	CODE
138	22	30	128	BRUSHED NICKEL	165.11.128
170	22	30	160	BRUSHED NICKEL	165.11.160
234	22	30	224	BRUSHED NICKEL	165.11.224
298	22	30	288	BRUSHED NICKEL	165.11.288
362	22	30	352	BRUSHED NICKEL	165.11.352
426	22	30	416	BRUSHED NICKEL	165.11.416
490	22	30	480	BRUSHED NICKEL	165.11.480
554	22	30	544	BRUSHED NICKEL	165.11.544

BUSSELTON



* BRUSHED ALUMINIUM

L	W	H	HOLE CENTRE	FINISH	CODE
141	13	32	128	BRUSHED ALUMINIUM	166.11.128
205	13	32	192	BRUSHED ALUMINIUM	166.11.192
269	13	32	256	BRUSHED ALUMINIUM	166.11.256
365	13	32	352	BRUSHED ALUMINIUM	166.11.352
525	13	32	512	BRUSHED ALUMINIUM	166.11.512

TERRANORA



* MATT NICKEL

L	W	H	HOLE CENTRE	FINISH	CODE
182	20	21	128	MATT NICKEL	167.13.128
244	20	25	160	MATT NICKEL	167.13.160

YEPPOON



* SATIN NICKEL

L	W	H	HOLE CENTRE	FINISH	CODE
124	10	30	96	SATIN NICKEL	168.02.096
156	10	30	128	SATIN NICKEL	168.02.128

KIRKWOOD



* SATIN NICKEL

L	W	H	HOLE CENTRE	FINISH	CODE
151	14	32	128	SATIN NICKEL	169.02.128

BUNBURY



* SATIN NICKEL

L	W	H	HOLE CENTRE	FINISH	CODE
138	10	28	128	SATIN NICKEL	175.02.128
170	10	28	160	SATIN NICKEL	175.02.160
298	10	28	288	SATIN NICKEL	175.02.288

CLAIRVIEW



* ALUMINIUM

L	W	H	HOLE CENTRE	FINISH	CODE
79	8	20	64	ALUMINIUM	180.08.064
120	8	20	96	ALUMINIUM	180.08.096
150	8	20	128	ALUMINIUM	180.08.128
184	8	20	160	ALUMINIUM	180.08.160

TOWNSVILLE



* BRUSHED NICKEL

L	W	H	HOLE CENTRE	FINISH	CODE
120	6	28	96	BRUSHED NICKEL	181.11.096
152	6	28	128	BRUSHED NICKEL	181.11.128
184	6	28	160	BRUSHED NICKEL	181.11.160
248	6	28	224	BRUSHED NICKEL	181.11.224
312	6	28	288	BRUSHED NICKEL	181.11.288

PROSERPINE



* ALUMINIUM

L	W	H	HOLE CENTRE	FINISH	CODE
160	25	27	128	ALUMINIUM	185.08.128
224	25	27	192	ALUMINIUM	185.08.192
288	25	27	256	ALUMINIUM	185.08.256
384	25	27	352	ALUMINIUM	185.08.352
544	25	27	512	ALUMINIUM	185.08.512

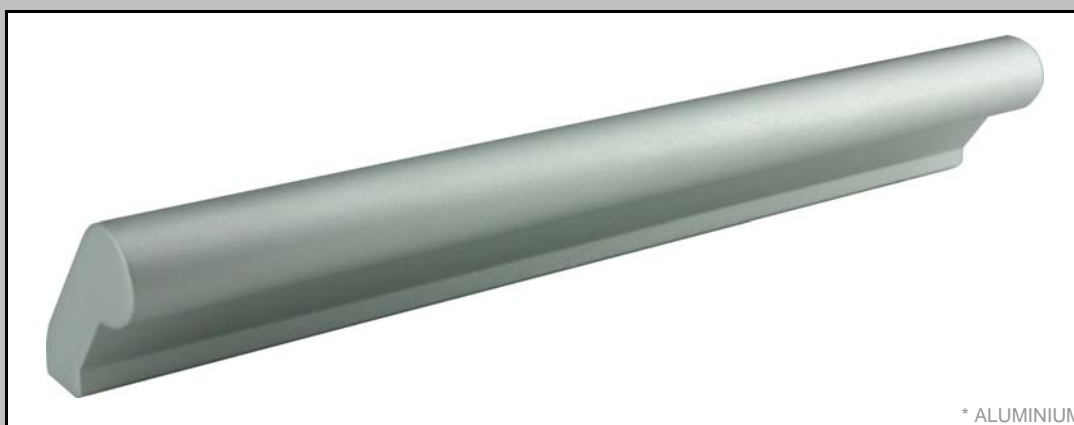
MERINDA



* ALUMINIUM

L	W	H	HOLE CENTRE	FINISH	CODE
74	23	24	64	ALUMINIUM	187.08.064
106	23	24	96	ALUMINIUM	187.08.096
135	23	24	128	ALUMINIUM	187.08.128
170	23	24	160	ALUMINIUM	187.08.160

BOWEN



* ALUMINIUM

L	W	H	HOLE CENTRE	FINISH	CODE
84	20	25	64	ALUMINIUM	188.08.064
116	20	25	96	ALUMINIUM	188.08.096
148	20	25	128	ALUMINIUM	188.08.128
180	20	25	160	ALUMINIUM	188.08.160

PITTSWORTH



* ANTIQUE BRASS

L	W	H	HOLE CENTRE	FINISH	CODE
118	25	25	96	ANTIQUÉ BRASS	190.07.096
118	25	25	96	PEWTER	190.14.096

CLERMONT



* ANTIQUÉ BRASS

L	W	H	HOLE CENTRE	FINISH	CODE
97	50	30	64	ANTIQUÉ BRASS	191.07.064
97	50	30	64	PEWTER	191.14.064

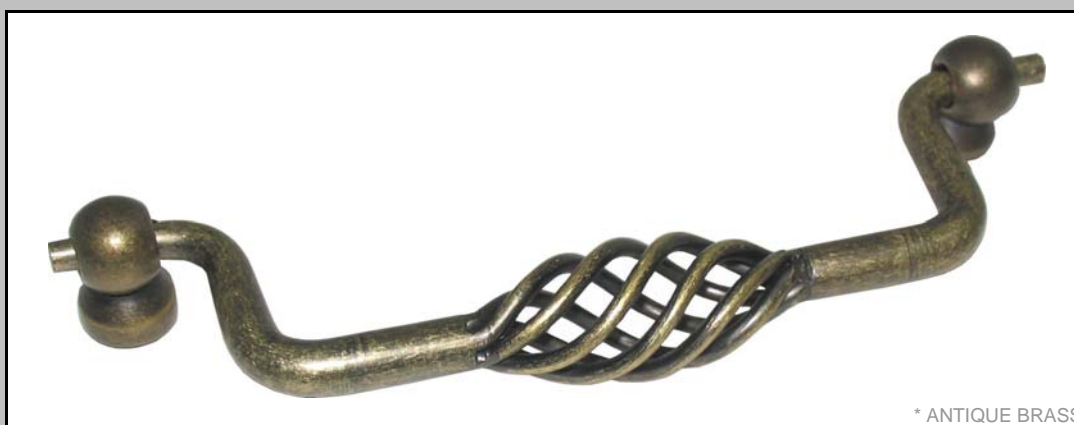
GATTON



* PEWTER

L	W	H	HOLE CENTRE	FINISH	CODE
104	20	40	96	ANTIQU BRASS	192.07.096
104	20	40	96	MATT BLACK	192.09.096
104	20	40	96	PEWTER	192.14.096

TOOWOOMBA



* ANTIQU BRASS

L	W	H	HOLE CENTRE	FINISH	CODE
150	52	22	128	ANTIQU BRASS	193.07.128
185	52	22	160	ANTIQU BRASS	193.07.160
150	52	22	128	MATT BLACK	193.09.128
185	52	22	160	MATT BLACK	193.09.160
150	52	22	128	PEWTER	193.14.128
185	52	22	160	PEWTER	193.14.160

HELIDON



* PEWTER

L	W	H	HOLE CENTRE	FINISH	CODE
70	25	40	.	ANTIQUE BRASS	194.07.070
70	25	40	.	MATT BLACK	194.09.070
70	25	40	.	PEWTER	194.14.070

CROWS NEST



* MATT BLACK

L	W	H	HOLE CENTRE	FINISH	CODE
34	34	50	.	ANTIQUE BRASS	195.07.034
34	34	50	.	MATT BLACK	195.09.034
34	34	50	.	PEWTER	195.14.034

LILYDALE



* ANTIQUE BRASS

L	W	H	HOLE CENTRE	FINISH	CODE
30	30	30	.	ANTIQUE BRASS	196.07.030
30	30	30	.	ANTIQUE BLACK	196.12.030
30	30	30	.	PEWTER	196.14.030

OAKEY



* PEWTER

L	W	H	HOLE CENTRE	FINISH	CODE
140	21	25	76	ANTIQUE BRASS	197.07.076
140	21	25	76	ANTIQUE BLACK	197.12.076
140	21	25	76	PEWTER	197.14.076

LAIDLEY



* ANTIQUE BRASS

L	W	H	HOLE CENTRE	FINISH	CODE
114	32	26	64	ANTIQUE BRASS	198.07.064
114	32	26	64	ANTIQUE BLACK	198.12.064
114	32	26	64	PEWTER	198.14.064

WYREEMA



* ANTIQUE BLACK

L	W	H	HOLE CENTRE	FINISH	CODE
34	34	25	.	ANTIQUE BRASS	199.07.034
34	34	25	.	ANTIQUE BLACK	199.12.034
34	34	25	.	PEWTER	199.14.034

ROCKHAMPTON



* SATIN NICKEL

L	W	H	HOLE CENTRE	FINISH	CODE
115	10	30	96	SATIN NICKEL	200.02.096
165	10	30	128	SATIN NICKEL	200.02.128
115	10	30	96	POLISHED CHROME	200.03.096
165	10	30	128	POLISHED CHROME	200.03.128
115	10	30	96	BLACK NICKEL	200.04.096
165	10	30	128	BLACK NICKEL	200.04.128
115	10	30	96	POLISHED BRASS	200.05.096
165	10	30	128	POLISHED BRASS	200.05.128
115	10	30	96	SATIN CHROME	200.06.096
165	10	30	128	SATIN CHROME	200.06.128

ATHERTON



* SATIN NICKEL

L	W	H	HOLE CENTRE	FINISH	CODE
114	10	22	96	SATIN NICKEL	201.02.096
114	10	22	96	SATIN CHROME	201.06.096

POTTSVILLE



* BRUSHED NICKEL

L	W	H	HOLE CENTRE	FINISH	CODE
115	10	32	96	BRUSHED NICKEL	205.11.096
151	10	32	128	BRUSHED NICKEL	205.11.128
189	10	32	160	BRUSHED NICKEL	205.11.160
263	10	32	224	BRUSHED NICKEL	205.11.224
337	10	32	288	BRUSHED NICKEL	205.11.288
115	10	32	96	POLISHED CHROME	205.03.096
151	10	32	128	POLISHED CHROME	205.03.128
115	10	32	96	SATIN CHROME	205.06.096
151	10	32	128	SATIN CHROME	205.06.128

CHINDERAH



* SATIN CHROME

L	W	H	HOLE CENTRE	FINISH	CODE
167	15	35	128	SATIN CHROME	208.06.128

MAROOCHYDORE



* SATIN CHROME

L	W	H	HOLE CENTRE	FINISH	CODE
111	12	24	96	POLISHED CHROME	210.03.096
111	12	24	96	BLACKNICKEL	210.04.096
111	12	24	96	SATIN CHROME	210.06.096

NOOSA



* SATIN CHROME

L	W	H	HOLE CENTRE	FINISH	CODE
154	13	28	128	SATIN NICKEL	215.02.128
154	13	28	128	SATIN CHROME	215.06.128

BRIBIE



* SATIN NICKEL

L	W	H	HOLE CENTRE	FINISH	CODE
115	8	30	96	SATIN NICKEL	220.02.096
154	8	30	128	SATIN NICKEL	220.02.128
115	8	30	96	POLSIHED CHROME	220.03.096
154	8	30	128	POLSIHED CHROME	220.03.128

ROBINA



* BRUSHED NICKEL

L	W	H	HOLE CENTRE	FINISH	CODE
114	15	22	96	BRUSHED NICKEL	230.11.096
147	15	25	128	BRUSHED NICKEL	230.11.128
114	15	22	96	POLSIHED CHROME	230.03.096
147	15	25	128	POLSIHED CHROME	230.03.128

POMONA



* MATT NICKEL

L	W	H	HOLE CENTRE	FINISH	CODE
157	12	28	128	MATT NICKEL	235.13.128

BUNDABERG



* BRUSHED NICKEL

L	W	H	HOLE CENTRE	FINISH	CODE
135	15	22	96	BRUSHED NICKEL	240.11.096
183	19	25	128	BRUSHED NICKEL	240.11.128
135	15	22	96	POLSIHED CHROME	240.03.096
183	19	25	128	POLSIHED CHROME	240.03.128
135	15	22	96	BLACK NICKEL	240.04.096
183	19	25	128	BLACK NICKEL	240.04.128

MACKAY



* SATIN NICKEL

L	W	H	HOLE CENTRE	FINISH	CODE
155	20	30	128	SATIN NICKEL	245.02.128
155	20	30	128	SATIN CHROME	245.06.128

CHARLEVILLE



* BRUSHED NICKEL

L	W	H	HOLE CENTRE	FINISH	CODE
113	16	21	96	BRUSHED NICKEL	250.11.096
152	20	25	128	BRUSHED NICKEL	250.11.128
113	16	21	96	POLSIHED CHROME	250.03.096
152	20	25	128	POLSIHED CHROME	250.03.128

CABARITA



* SATIN NICKEL

L	W	H	HOLE CENTRE	FINISH	CODE
136	20	25	128	SATIN NICKEL	255.02.128

FRASER



* ALUMINIUM

L	W	H	HOLE CENTRE	FINISH	CODE
148	16	34	128	ALUMINIUM	260.08.128
187	16	34	160	ALUMINIUM	260.08.160
236	16	34	224	ALUMINIUM	260.08.224

MT ISA



* SATIN NICKEL

L	W	H	HOLE CENTRE	FINISH	CODE
125	18	27	96	SATIN NICKEL	265.02.096
160	18	27	128	SATIN NICKEL	265.02.128
195	18	27	160	SATIN NICKEL	265.02.160
265	18	27	224	SATIN NICKEL	265.02.224

KILLARNEY



* SATIN NICKEL

L	W	H	HOLE CENTRE	FINISH	CODE
145	15	28	128	SATIN NICKEL	270.02.128
145	15	28	128	SATIN CHROME	270.06.128

GRAFTON



* SATIN NICKEL

L	W	H	HOLE CENTRE	FINISH	CODE
42	28	22	.	SATIN NICKEL	402.02.042
42	28	22	.	POLISHED CHROME	402.03.042

YAMBA



* SATIN NICKEL

L	W	H	HOLE CENTRE	FINISH	CODE
55	21	15	16	SATIN NICKEL	403.02.016
55	21	15	16	POLISHED CHROME	403.03.016

ILUKA



* SATIN NICKEL

L	W	H	HOLE CENTRE	FINISH	CODE
35	30	25	.	SATIN NICKEL	404.02.035
35	30	25	.	POLISHED CHROME	404.03.035

SEAFORTH



* SATIN NICKEL

L	W	H	HOLE CENTRE	FINISH	CODE
43	20	20	16	SATIN NICKEL	407.02.016
43	20	20	16	POLISHED CHROME	407.03.016

TATHAM



* CRACKLE ANTIQUE BRASS

L	W	H	HOLE CENTRE	FINISH	CODE
70	27	48	.	CRACKLE PEWTER	405.15.070
70	27	48	.	CRACKLE ANTIQUE BRASS	405.16.070

YORKLEA



* CRACKLE ANTIQUE BRASS

L	W	H	HOLE CENTRE	FINISH	CODE
35	35	35	.	CRACKLE PEWTER	406.15.035
35	35	35	.	CRACKLE ANTIQUE BRASS	406.16.035

GLENDON



* SATIN NICKEL

L	W	H	HOLE CENTRE	FINISH	CODE
40	15	24	32	SATIN NICKEL	408.02.032
40	15	24	32	POLISHED CHROME	408.03.032

BRAMPTON



* SATIN NICKEL

L	W	H	HOLE CENTRE	FINISH	CODE
35	13	17	.	SATIN NICKEL	409.02.035
35	13	17	.	POLISHED CHROME	409.03.035

KEMPSEY



* POLISHED BRASS

L	W	H	HOLE CENTRE	FINISH	CODE
30	30	23	.	POLISHED BRASS	410.05.030
35	35	26	.	POLISHED BRASS	410.05.035

EMERALD



* SATIN NICKEL

L	W	H	HOLE CENTRE	FINISH	CODE
30	30	30	.	SATIN NICKEL	420.02.030
30	30	30	.	POLISHED CHROME	420.03.030
30	30	30	.	BLACK NICKEL	420.04.030

COOKTOWN



* SATIN NICKEL

L	W	H	HOLE CENTRE	FINISH	CODE
24	24	25	.	SATIN NICKEL	427.02.025

BELMONT



* ALUMINIUM

L	W	H	HOLE CENTRE	FINISH	CODE
25	25	29	.	POLISHED CHROME	430.03.025
25	25	29	.	ALUMINIUM	430.08.025

TARA



* PEWTER

L	W	H	HOLE CENTRE	FINISH	CODE
38	38	25	.	ANTIQUÉ BRASS	445.07.038
38	38	25	.	PEWTER	445.14.038

MILES



*ANTIQUÉ BRASS

L	W	H	HOLE CENTRE	FINISH	CODE
100	35	35	64	ANTIQUÉ BRASS	446.07.064
100	35	35	64	PEWTER	446.14.064

WONDAI



* PEWTER

L	W	H	HOLE CENTRE	FINISH	CODE
50	22	24	.	ANTIQUÉ BRASS	447.07.050
50	22	24	.	PEWTER	447.14.050

TAROOM



*ANTIQUÉ BRASS

L	W	H	HOLE CENTRE	FINISH	CODE
165	32	28	128	ANTIQUÉ BRASS	448.07.128
165	32	28	128	PEWTER	448.14.128